

**Grand SPA Resort A-ROSA Kitzbühel furnished  
with know-how from Belimo**

# Just relax!

*Forget your routine stress and the pressure from your job - the new Grand SPA Resort A-ROSA in Kitzbühel offers you a luxurious environment for pure relaxation, golf, pleasure & nature. Also thanks to the know-how of Belimo in technical building system technology.*



The architecture of the new Grand SPA Resort A-ROSA in Kitzbühel fits perfectly into the surroundings and was built in the style of a Tyrolian castle.

It has been about one year now since the new 5-star luxury hotel A-ROSA in Kitzbühel started welcoming their first guests. The location of the new dream hotel for summer and winter guests looking for relaxation could not be better: The new luxury SPA resort lies directly opposite the famous Streif ski run and offers a fantastic view of the Alpine panorama. Even golfers will have their fun here – The Golf Club Kitzbühel lies directly by the resort (9 holes). The contractor for this property, Dr. Ebertz & Partner, gave the job to the architectural office Flattinger Design and Heino Stamm from Munich. The four connected buildings of the new hotel, which has 104 rooms, 46 suites and a few large rooms for conferences and events, fit into their surroundings architecturally and were built in the style of a Tyrolian castle (the Kaps Castle from the 15th Century lies opposite the hotel).

The operators of the new luxury hotel, the Arkona AG (a subsidiary of the German shipping company, who also designed AIDA cruise ships and operates ten hotels in Germany), offer their guests pure relaxation & pleasure for body & soul. Around 150 staff, who are managed by the Austrian director Eva Loquenz, will take care of any concerns the guests may have in A-ROSA, including, of course, the culinary ones. Three restaurants and a few top chefs will make sure of that. The concept for health & fitness in A-ROSA Kitzbühel is trend-setting. In addition to seven different saunas, the 3000 m<sup>2</sup> SPA area offers the guests an ice grotto, yoga room and 16 application rooms for beauty, massage & exotic highlights, and there's also a preventive medicine department for sports diagnostics. But that's not all. There is also an indoor and an outdoor pool which is heated

all year round, as well as a 100 m<sup>2</sup> private SPA suite, giving guests what they're looking for: relaxation & well being. A wide range of different exotic beauty and body treatments (hay bath, hot stone, lava Lulur, Bali peeling, Brazilian Guarana ... ) are carried out by professional experts:

### **Extensive house and building technology**

Professional experts and relevant know-how were also in demand and of essential importance in the house and building technology of the A-ROSA Hotel in Kitzbühel; on the one hand, to meet the specifications of the contractor, architect, planning engineer and operator; on the other hand, of course, to meet the expectations of the guests who are looking for luxury in this regard. An extensive job for professionals – VA Tech Elin EBG, now called Siemens Elin, was responsible for the technical building furnishings in the Grand SPA Resort A-ROSA Kitzbühel. The systems for heating, cooling, sprinklers, sanitary engineering, ventilation and air conditioning, as well as the entire measuring and control technology, was adapted to the individual requirements of this property. One could say it was «tailor-made».

### **Thanks to pressure-independent characterised control valves...**

Energy savings at the greatest level of comfort and low installation costs are the require-

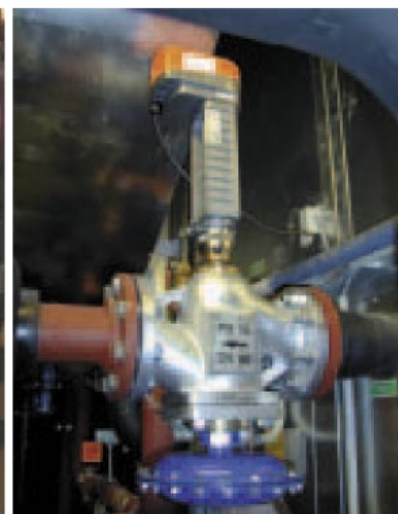
ments for creating new buildings or renovations, and, of course, also play an important role in the A-ROSA Hotel in Kitzbühel. With the pressure-independent characterised control valve, Belimo has a product in its product range which exactly meets these demands. After all, thanks to them, not only is the valve design simplified – the flow is constant, even when the valve closes and the differential pressure rises. But what counts most of all is that thanks to the pressure-independent characterised control valve, hydraulic balancing is no longer necessary. Furnishing a building becomes simpler, since only one valve per consumer is required. Since balancing valves are no longer needed and hydraulic balancing can be dispensed with, costs in the form of time and material can be saved, and that at a higher level of comfort.

### **...time savings of 1 week**

This project has taught us more about the advantages of the pressure-independent characterised control valves: Their excellent technical data, such as the sealing effect (air-bubble-tight), high closing pressure, small installation dimensions and the same nominal widths for different kvs values, are convincing. In addition, with this, Belimo covers all nominal widths up to DN 100. Engineer Brandstetter from VA Tech Elin EBG, now called Siemens Elin, gets to the point: «Thanks to the use of pressure-independent



Hydraulic balancing is no longer necessary with the pressure-independent characterised control valves and globe valves from Belimo, which saves on time, costs and nerves.



Belimo delivers 32 pressure-independent characterised control valves and 5 pressure-independent globe valves.



The 3,000 m<sup>2</sup> SPA area of the A-ROSA in Kitzbühel offers the guests every conceivable luxury for relaxing and feeling good.

regulated control fittings, we expect advantages in installation – 1 instead of 2 fittings (no balancing valve) – and in commissioning, because no hydraulic balancing is necessary in the control loop. Thanks to the pressure-independent control fittings, the time saved was about 1 week for 2 persons.»

The «other» services which Belimo Austria provided in this project were equally well-adapted to the construction site: Technical consulting and project support were characterised as being excellent; even the on-time delivery was exemplary during the entire period of construction. Overall, Belimo delivered the following for the A-ROSA project, Kitzbühel: 9 characterised control valves, 3 globe valves, 32 pressure-independent characterised control valves, 5 pressure-independent globe valves, 48 RLT damper positioning actuators and 210 fire damper actuators. In the case of single items, short-term deliveries weren't a problem either. That even the price/performance ratio matched can be seen for yourself.

«Since the project ran so smoothly, we can imagine cooperating in other projects with them again – Belimo is an expert partner when it comes to HVAC, who we can recommend to anyone.»

#### **A success**

Between the completion and the opening of the A-ROSA in Kitzbühel, there wasn't any time to test the building installations – one had to just do a «cold start». But the entire infrastructure worked perfectly. The days around the Hahnenkamm Race on the Streif in Kitzbühel were the actual «acid test» for all the people involved in the technical building systems, after all 150 rooms and suites were fully booked out.

#### **Information**

[www.a-rosa.de](http://www.a-rosa.de)

[www.belimo.at](http://www.belimo.at)

## The project A-ROSA

### A few technical parameters for the Grand SPA Resort A-ROSA Kitzbühel

Building owner:	Dr. Ebertz & Partner
Operator:	Arkana AC
Architect:	Flattinger Design
Interior decorator:	Stamm Planungsgruppe GmbH
Planning engineers:	IS Salzburg (Industrial Services)
Production planning:	VA Tech Elin EBG, now called Siemens Elin Complete technical building systems / heating, cooling, ventilation, sanitary engineering, electric system
Software data points:	Around 1700
Hardware data points:	Around 1400
Hotel heating (2 central systems/ SPA, hotel):	Capacity of 1400 kW each
Clubhouse heating + ventilation:	1300 kW
Central ventilation systems:	8 Wolf systems (3x roof, 1x central, 1x SPA, 1x swimming pool, 1x underground garage, 1x clubhouse); 270,000 m <sup>3</sup> total
Central cooling system:	1x 750 kW (York)
Boilers:	Viessmann
Fire dampers:	Belimo
RLT actuators:	Belimo
Pressure-independent characterised control valves:	Belimo